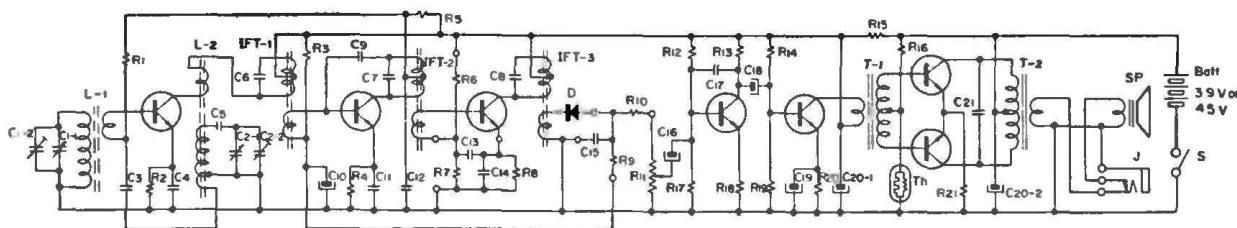


VOLUME R-24, MOST-OFTEN-NEEDED 1964 RADIO SERVICING INFORMATION

SONY TR-730

X-1 X-2 X-3 X-4 X-5 X-6 X-7

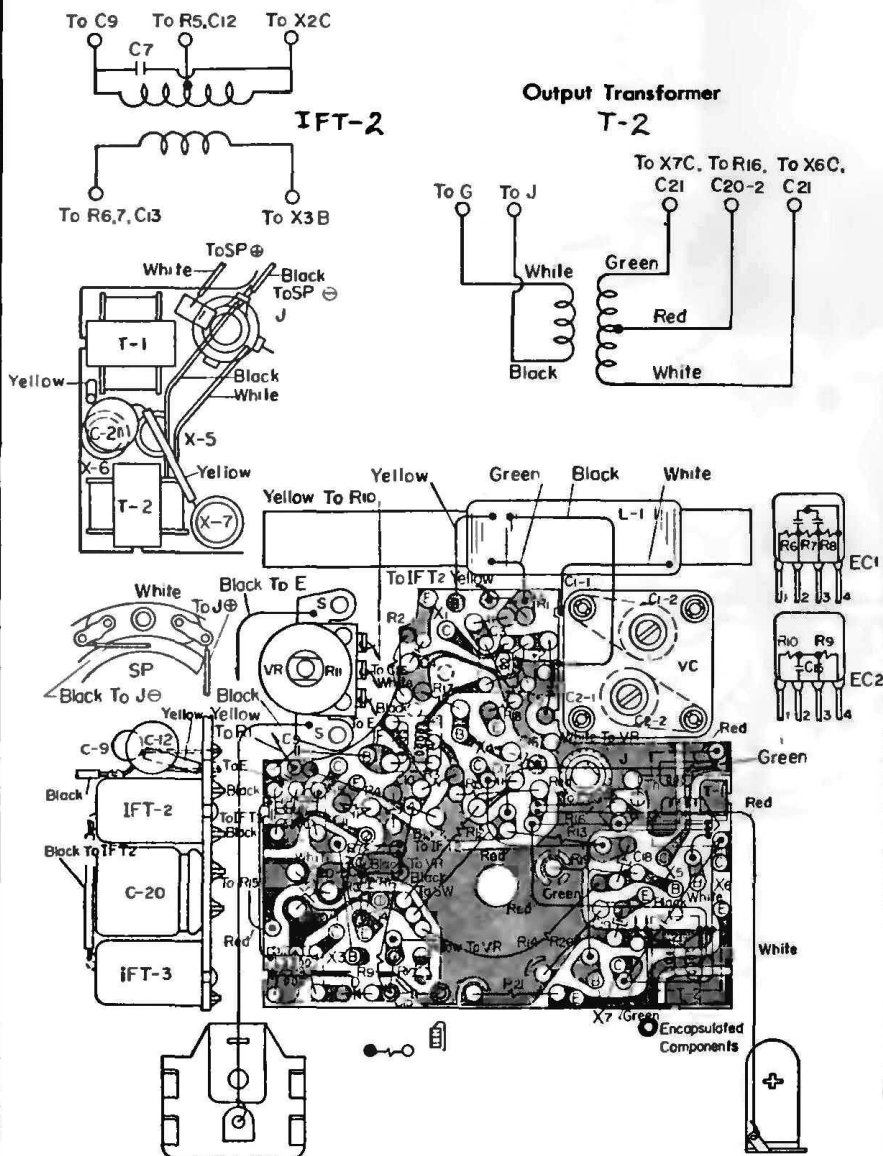


—○— Encapsulated Component

Frequency Coverage : 535 Kc ~ 1,605 Kc
IF Frequency : 455 Kc
Current Drain : 9 mA at zero signal, 42 mA at 92 mW output
Dimensions : 3" X 2-1/4" X 1-1/8" (76 X 57 X 29 mm)
Weight : Less than 7 ounces (180 gr.) with Battery

To take out Circuit Board :

- 1) Remove one gold-plated Philips screw (plus screw) on the left side.
- 2) Unscrew the rear cover securing screw.
- 3) Open the rear cover.
- 4) Remove securing metal post for rear cover.
- 5) Remove one Philips screw (plus screw) on the chassis near volume knob.



Parts No.	Symbol	Description
1-401-108-01	L ₁	Ferrite Bar Antenna
1-405-001-	L ₂	Oscillator Coil
1-403-057-00	IFT ₁	IF Transformer
1-403-058-00	IFT ₂	"
1-403-059-00	IFT ₃	"
1-423-042-	T ₁	Driving Transformer
1-427-059-	T ₂	Output "
1-502-044	Sp	Speaker
1-507-038-01	J	Earphone Jack
	X ₁	Transistor 2SC73
	X ₂	" 2SC75
	X ₃	" 2SC76
	X ₄	" 2SD65
	X ₅	" "
	X ₆	" "
	X ₇	" "
	D	Diode 1T23G
	Th	Thermistor CS120
	Batt.	Battery
1-201-601-00	R ₁	Composition Resistor
1-528-010-00		10 kΩ 1/10 W ± 10%
1-528-011-00		15 kΩ "
1-201-201-00	R ₂	75 kΩ 1/10 W ± 5%
1-201-211-00	R ₃	330 Ω 1/10 W ± 10%
1-201-131-00	R ₄	5.6 kΩ "
1-201-106-00	R ₅	"
1-101-403-	R ₆	Encapsulated Components 22 kΩ
1-101-404	R ₇	" " 3.3 kΩ
	R ₈	" " 330 kΩ
	R ₉	" " 10 kΩ
	R ₁₀	" " 330 Ω
1-221-257-	R ₁₁	Potentiometer 5 kΩ
1-201-202-00	R ₁₂	Composition Resistor
		56 kΩ 1/10 W ± 10%
1-201-135-00	R ₁₃	2.2 kΩ "
1-201-166-00	R ₁₄	27 kΩ "
1-201-188-00	R ₁₅	Composition Resistor
		100 Ω 1/10 W ± 10%
1-201-189-00	R ₁₆	" 2.7 kΩ "
1-201-158-00	R ₁₇	" 3.3 kΩ "
1-201-186-00	R ₁₈	" 33 Ω "
1-201-135-00	R ₁₉	" 2.2 kΩ "
1-201-187-00	R ₂₀	" 62 Ω "
1-201-185-00	R ₂₁	" 5.1 Ω "
1-101-021-	C ₃	Capacitor
		0.01 μF ±20% Ceramic
1-101-020-	C ₄	" 0.005 μF " "
1-103-047-	C ₅	" 130 pF ±50% Styrol
	C ₆	" 150 pF built in IFT ₁
	C ₇	" 150 pF built in IFT ₂
	C ₈	" 150 pF built in IFT ₃
1-101-045-	C ₉	" 1 pF 0.5 pF Ceramic
1-119-068-04	C ₁₀	" 5 μF ±10% 3 V Electrolytic
1-101-022-	C ₁₁	" 0.02 μF ±20% Ceramic
1-101-021-	C ₁₂	" 0.01 μF ±20% "
1-101-403-	C ₁₃	"
	C ₁₄	0.01 μF (Encapsulated with R _{6, 7, 8})
1-101-404-	C ₁₅	0.01 μF (Encapsulated with R _{9, 10})
1-127-901-	C ₁₆	Capacitor
		0.3 μF ±20% 6 V Aiox
1-101-022-	C ₁₇	0.02 μF ±20% Ceramic
1-119-068-04	C ₁₈	5 μF ±10% 3 V Electrolytic
1-119-068-04	C ₁₉	5 μF ±10% "
1-125-105-04	C ₂₀	50 μF X 2 ±20% 4.5V Electrolytic Block
1-101-021-	C ₂₁	0.01 μF ±20% Ceramic