

Bang & Olufsen

Beolab Penta

Type 6631, 6632, 6633, 6634, 6635

INDKLÆBES I SERVICEANVISNING BEOVOX 4
TO PASTE INTO SERVICE MANUAL BEOVOX 4

3538792

09-91



**Ledningsmontering på
nettransformatorer**

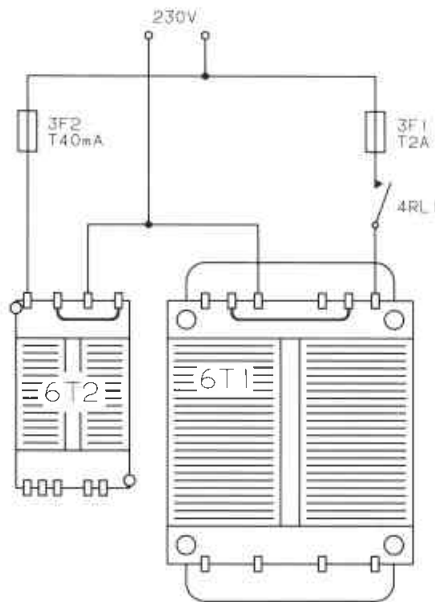
Wiring of Mains Transformers

Type 6631

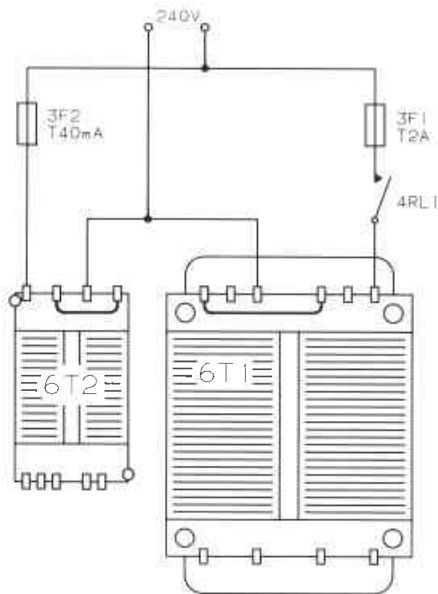
Type 6632

Type 6635

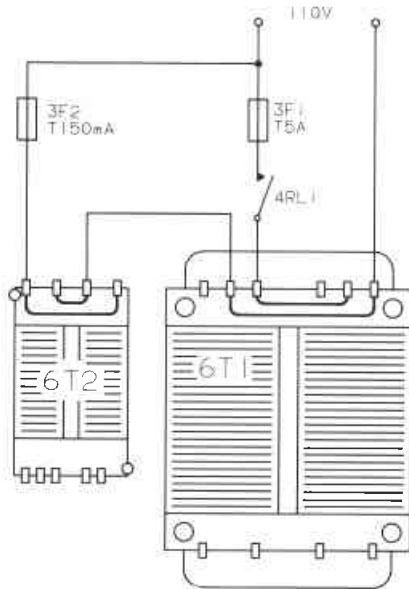
6T1 8013494
6T2 8013370
3F1 6600009
3F2 6600070



6T1 8013494
6T2 8013370
3F1 6600009
3F2 6600070



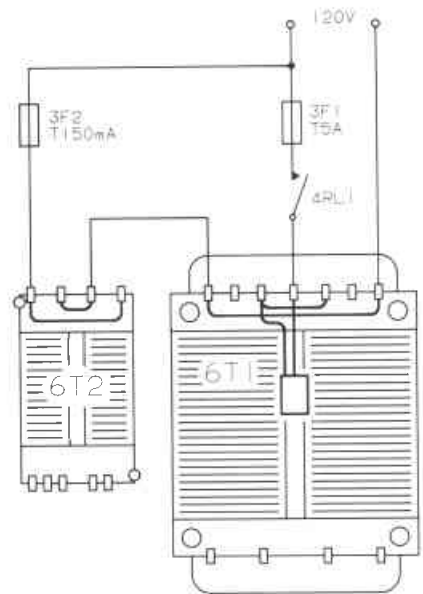
6T1 8013494
6T2 8013370
3F1 6600009
3F2 6600070



Type 6633

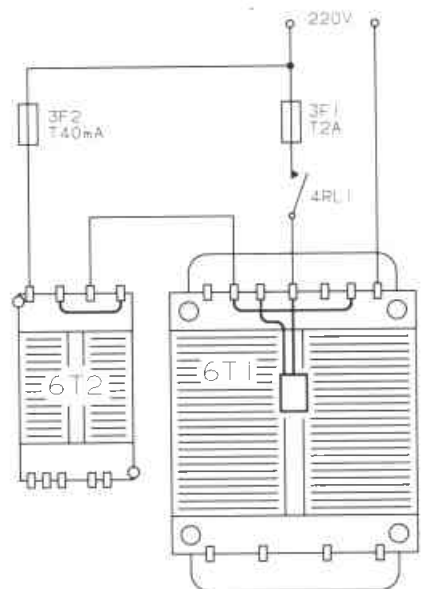
6T1 8013375
6T2 8013370

3F1 6600019
3F2 6600069



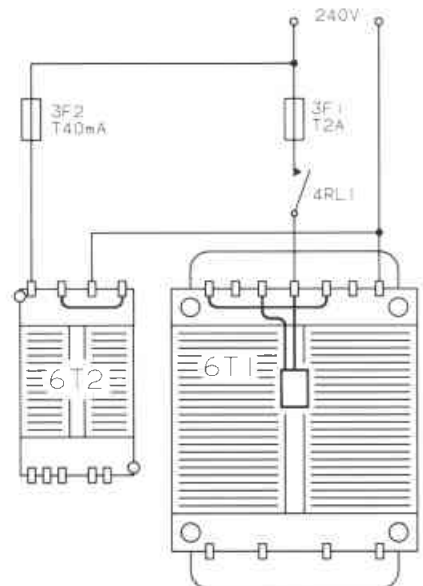
6T1 8013375
6T2 8013370

3F1 6600009
3F2 6600070



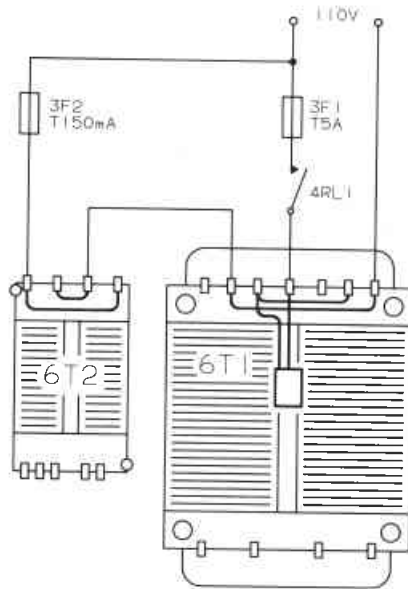
6T1 8013375
6T2 8013370

3F1 6600009
3F2 6600070



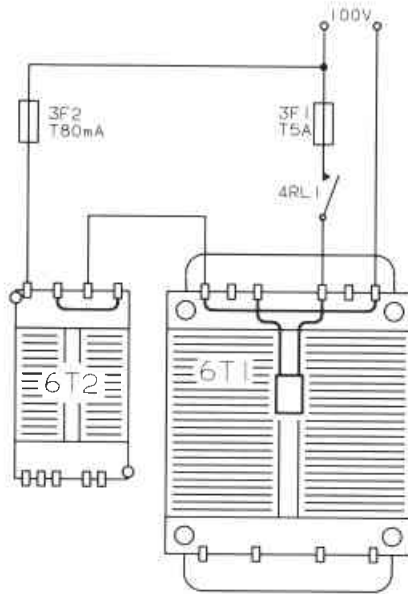
Type 6633

6T1 8013375
 6T2 8013370
 3F1 6600019
 3F2 6600069



Type 6634

6T1 8013376
 6T2 8013377
 3F1 6600095
 3F2 6600103



PCB 23, Microcomputer

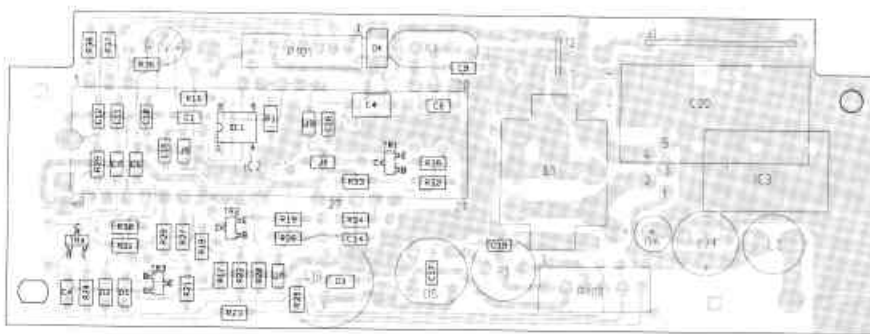
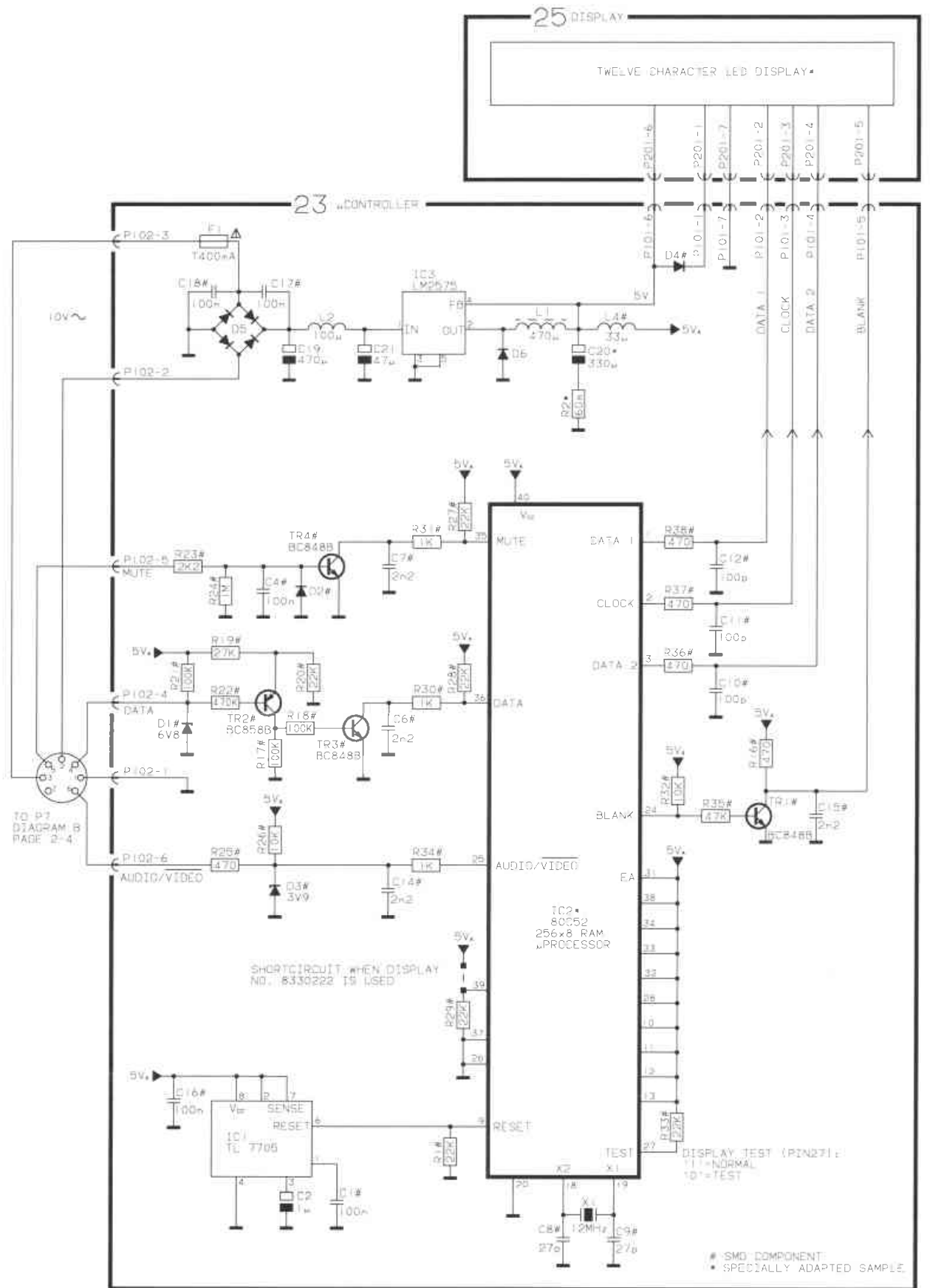


DIAGRAM A, Display 663X



LIST OF ELECTRICAL PARTS

51	124	143	156	209	250		

Resistors not referred to are standard, see page 3-4

Δ Indicates that static electricity may destroy the component

* Specially selected or adapted sample

PCB23, 8001443

Microprocessor

IC1	8341612	156	TL 7705	IC3	8341770	143	LM 2575
IC2Δ*	8341771	124	μP 80C52				

TR1	8320615	051	BC 848B	TR3-	8320615	051	BC 848B
TR2	8320616	051	BC 858B	TR4			

D1	8300520	250	Z 6.8V 5%	D4	8300557	250	BYM10
D2	8300482	250	LL 4148	D5	8300466		125V 1.5A
D3	8300577	250	Z 3.9V 2%	D6	8300795	209	1N 5822

R2*	5012142		60 mΩ				
-----	---------	--	-------	--	--	--	--

C1	4010166	100nF -20+80% 50V	C14-	4010170	2.2nF 10% 50V
C2	4200512	1μF 20% 50V	C15		
C4	4010166	100nF -20+80% 50V	C16-	4010166	100nF -20+80% 50V
C6-	4010170	2.2nF 10% 50V	C18		
C7			C19	4200993	470μF 20% 50V
C8-	4000278	27pF 5% 50V	C20*	4201116	330μF 20% 25V
C9			C21	4200952	47μF -20+50% 25V
C10-	4000241	100pF 5% 50V			
C12					

L1	8020914	Coil 470μH	L4	8020817	Coil 33μH
L2	8020912	Coil 100μH			

X1	8090075	Crystal 12MHz			
----	---------	---------------	--	--	--

F1	6600080	Fuse 400mAT			
----	---------	-------------	--	--	--

P101	7220714	Plug 7 pole	P102	7220318	Plug 6 pole
------	---------	-------------	------	---------	-------------

All other electrical parts are identical with chapter 3 for 662x (3538730)